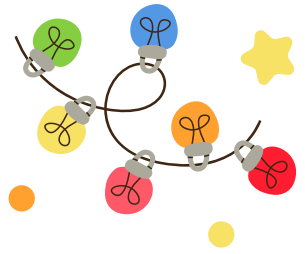


# Reverse 12 DAYS OF Foodbank CHRISTMAS



To allow us to pack parcels for delivery / collection prior to Christmas, **our last date for Christmas donations is the 29<sup>th</sup> November.**

**Please do not donate** alcohol (or products containing alcohol), or short dated items (dates before March 2024) as, if we have an abundance, some items may continue to be given out after Christmas.

**Donate** at any of our collection points (on our website). Our warehouse will be open Mondays, 1:30-3:30pm, Tuesdays, 6:00-7:30pm and Fridays, 10:30-12:30pm for donations or by appointment (please call).

In the 12  
Days of Foodbank  
Christmas, people  
gave  
generously,

Tinned salmon and ham

Long-life juice

Tinned tomatoes

Fruit cordial

Selection boxes & Chocolates

Tins of fruit

Hot chocolate

Dairy milk (UHT)

Tinned carrots, peas and  
green beans

Rice pudding

Tins of Soup

And a jar of instant coffee

The easiest way to keep informed about what we need is to download, and follow us, on the 'BANKTHEFOOD' app.



info@cirencester.foodbank.org.uk  
01285 896360  
cirencester.foodbank.org.uk

Registered Charity in England & Wales  
(1159810).